

About us

Steel Bond Commercial Establishment, one of the proud members of Ali Al Nemer GROUP, has established itself as a leader within the market in the past eight years, focusing on the manufacture of expertly constructed hot dip galvanized and epoxy-coated steel items. Our range of products includes a diverse selection of steel products, including Embedded Plates, Embedded Angles, Anchor Bolts, Dowel Bars, and Gratings made out of carbon and alloy steel and stainless steels of varying grades, designed to meet the needs of our clients. Steel Bond is a company committed to meeting the requirements of our GCC customers and paying attention to serving our valued Saudi customers with high-quality, affordable steel parts. We have a large production capacity of 500 tons per month. We are constantly striving to meet the highest standards in customer support.



Vision

To establish ourselves as the most reliable and competitive solution supplier for the Saudi steel industry, setting new standards in quality and reliability.

Mission

Our goal is to provide top-quality steel products using cutting-edge technology and encourage an environment of highly motivated employees committed to continuously advancing. We abide by the highest ethical standards in business and conduct to ensure that our efforts result in tangible value for our clients and reinforce our dedication to excellence and honesty in all aspects of our work.



QUALITY POLICY STATEMENT



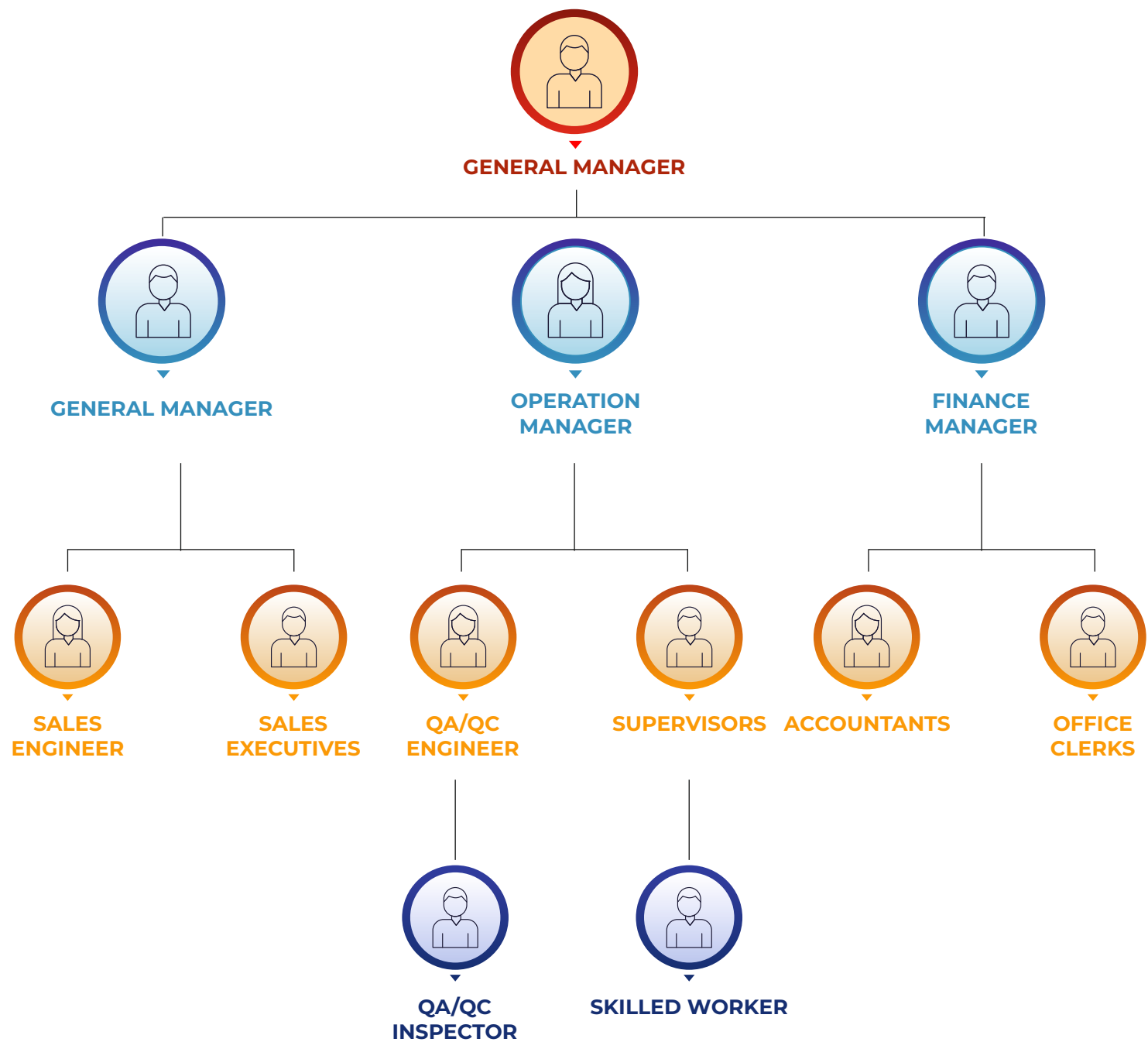
Steel bond commercial establishment is committed to provide products and services at the highest quality standards that meet or exceed customer requirements in accordance with international standards.

Our quality policy commitment is based upon

1. Complying with requirements of ISO 9001 standards
2. Continually improving our quality management system.
3. Establishing quality objectives and periodically reviewing performance
4. Focusing on process improvement initiatives
5. Providing safe and healthy work environment
6. Developing employee skills and increasing their contribution through effective training
7. Ensuring our suppliers and subcontractors meet our quality requirements.

MOHAMMED ALI AL NEMER
GENERAL MANAGER

ORGANIZATION CHART

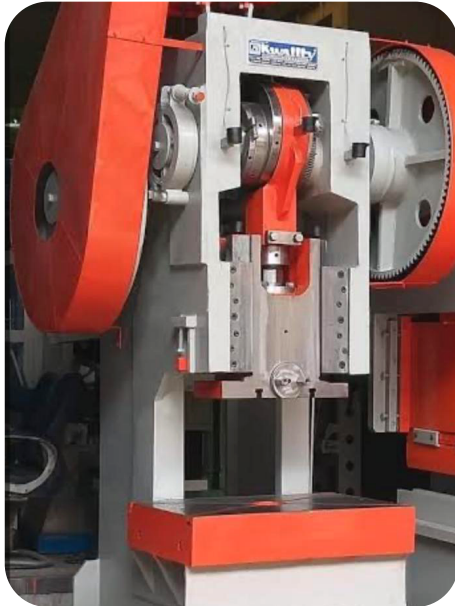


MANUFACTURING EXCELLENCE WITH STATE-OF-THE-ART MACHINERY

The core of our manufacturing capabilities is an array of modern equipment that allows us to produce various high-quality products. Every machine plays an essential role in the process of fabrication that ensures the precision, efficiency and top quality of each product we create



With the help of these highly technical machines, we guarantee the creation of top-quality products like Anchor Bolts, Embedded Plates, Embedded Angles, Epoxy Dowel Bars coated with epoxy, Pipe Clamps, PVC Sleeves and Caps and Dowel Bars made of stainless steel, Steel Gratings, and U Bolts. Our dedication to quality and innovation is evident in the unparalleled high-end quality and



durability of our production processes and the durability of our products.

ANCHOR BOLTS

Steel Bond Anchor Bolts Securing Strength, Ensuring Safety

Steel Bond redefines the standard for anchor bolts, ensuring that each bolt reflects our dedication to safety and strength. Made with a meticulous eye for minor details and manufactured using premium materials, the anchor bolts we offer testify to longevity and reliability within the construction field. With rigorous testing and quality assurance procedures, we ensure that our products will provide superior performance and exceed the highest quality standards.

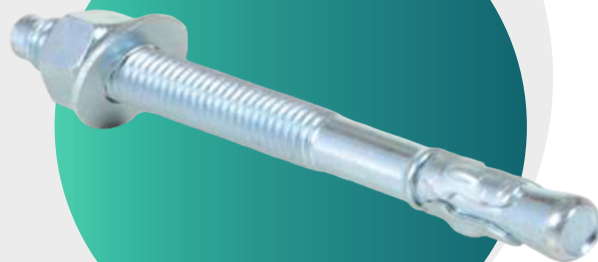
Unbeatable durability: Made of the highest quality materials to ensure durability and resistance against corrosion.

Superior Tensile Strength is designed to withstand the most challenging conditions; it ensures security and stability.

Simple Installation designed for speed and efficiency Our bolts provide an easy installation.

Cutting Edge Manufacturing Utilizing the most advanced technology and processes to produce accuracy and quality that surpasses the industry standard.

Cutting Edge Manufacturing Utilizing the most advanced technology and processes to produce accuracy and quality that surpasses the industry standard.



EMBEDDED PLATES

Steel Bond Embedded Plates: Engineering Excellence for Enduring Structures



Steel Bond's Embedded Plates set the standard in the industry by combining strength, precision and dependability to be the foundation of structural solidity. Our dedication to excellence is evident through our meticulous engineering, top-quality materials, advanced manufacturing, and versatility in our products across different applications. Opt to use Steel Bonds not just to construct structures but also to create a lasting legacy.

Precision Engineering: The Embedded plates was designed with a keen eye for the smallest detail; it ensures seamless installation into concrete constructions to ensure the most robust possible durability.

High-quality material Produced using high-quality steel. Our plates provide extraordinary strength, durability, and resistance to environmental wear and environmental conditions.

Advanced Manufacturing: Utilizing the latest manufacturing technology, our plates are made



according to the highest standards, guaranteeing stability and consistency.

Flexible Applications: Perfect for various construction projects. Our Embedded Plates offer a sturdy anchoring solution to any structural need.

EMBEDDED ANGLES

Steel Bond Embedded Angles: Fortifying Structures, Shaping Futures



Steel Bond's Embedded Angles represent the pinnacle of strength and flexibility made to meet the demands of modern-day construction. They are manufactured precisely, so they are a perfect fit for various construction projects, ranging from buildings to bridges, ensuring essential stabilization and support. The use of premium steel in their production ensures longevity and resistance to environmental stress and makes them a secure choice for any construction project.

The significant advantages of Steel Bond's Angles Embedded Angles are as follows:

Improved Structural Integrity Its design guarantees an enduring connection between various structural elements, which enhances its overall strength of structure.

Durability: Made from high-quality steel, The angles resist corrosion and wear, which ensures longevity even in the most demanding conditions.

Multi-purpose: It is suitable for a variety of applications; they can be modified to meet specific specifications of a project, allowing for the flexibility of the design and construction.

Easy Installation: is designed to facilitate efficient Installation at construction sites, thereby saving



time and reducing the cost of labour.

Selecting Steel Bond's Embedded Angles means investing in the future of your construction projects and securing the project with unrivalled quality and durability.



EPOXY COATED DOWEL BARS

Steel Bond Epoxy Coated Dowel Bars: Reinforcing Tomorrow with Strength and Durability



Steel Bond's Epoxy Coated Dowel bars are designed for strength and durability, making them vital for constructing long-lasting, durable concrete structures and pavements. These dowel bars are expertly coated with an epoxy resin that significantly increases their resistance to wear and corrosion and ensures that the concrete structures' strength is preserved throughout the years.

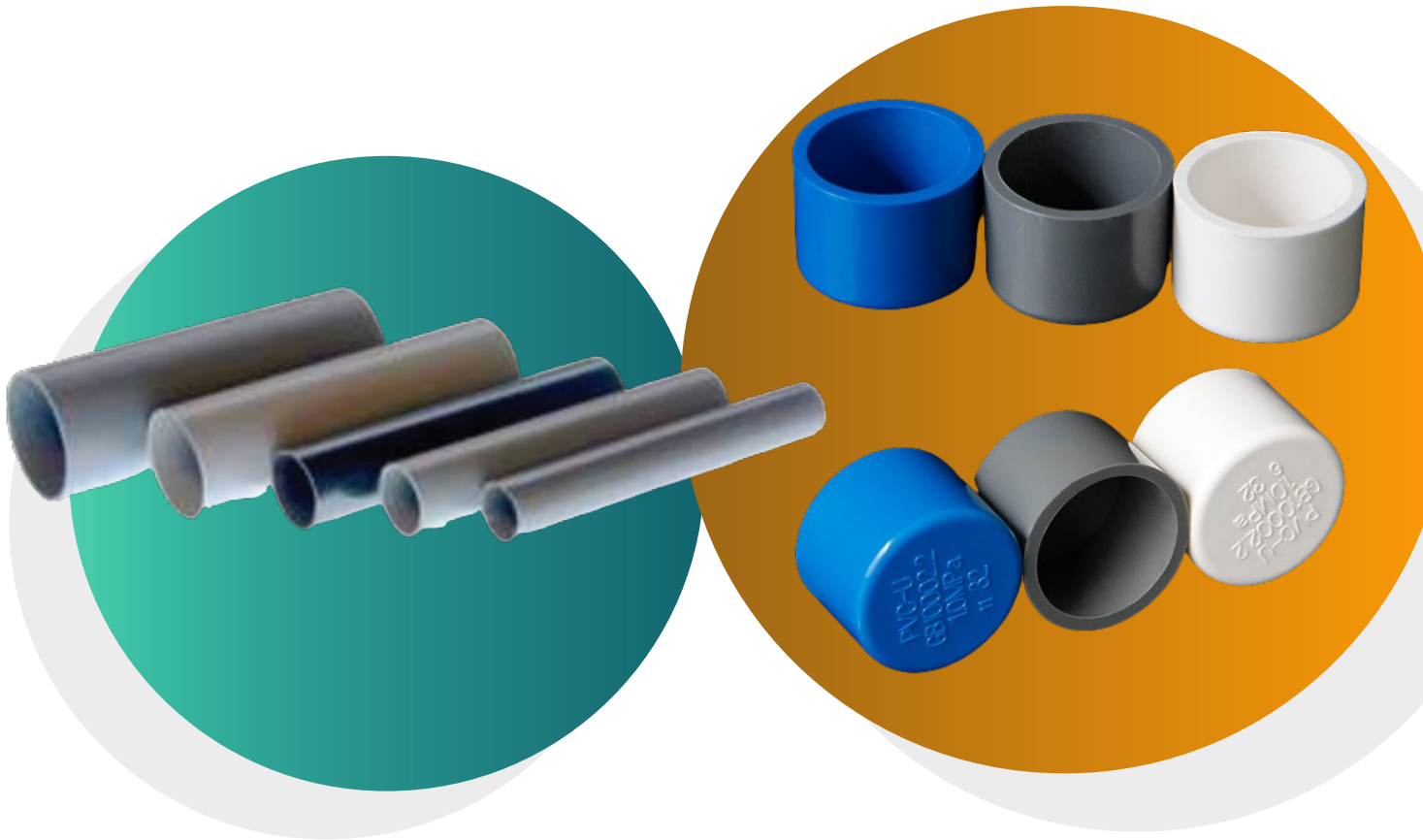
Steel Bond's critical features in its Dowel Bars with Epoxy Coated are:

- **Anti-corrosion** The epoxy coating can act as a shield against the elements of moisture and chemicals, significantly lessening the danger of corrosion and rust.
- **Effective Load Transfer** Created to transfer the weight across joints in concrete dowel bars guarantees the smooth and efficient functioning of pavements and other structures.
- **Durability:** Thanks to their increased durability, dowel bars add to the durability of concrete structures while reducing maintenance requirements and lifecycle costs.
- **Environment Sustainability** Utilizing dowel bars coated with epoxy aids in maintaining the strength of concrete structures without constant repair or replacement, contributing to environmentally sustainable building practices.

When you incorporate Steel Bond's Epoxy Coated Dowel Bars in your constructions, you choose the best solution that combines superior protection and performance, ensuring your projects endure the test of time.

PVC SLEEVES AND CAPS

Steel Bond PVC Sleeves and Caps: Protecting Integrity, Ensuring Longevity



Steel Bond PVC sleeves and Caps are specifically designed to provide an optimal level of security for projects in construction, assuring that the embedded objects remain in good condition and safe from environmental elements, corrosion, and physical damage. They use the highest top-quality polyvinylchloride (PVC), known for its strength, flexibility, and chemical resistance. This makes them the perfect choice for protecting anchor bolts, rebar, and other embedded items.

The significant benefits of Steel Bond PVC Caps are

- **Advanced Protection, The Enhanced Protection,** provides an effective barrier to chemical, water, and physical impacts, which extends the life span of the building components they cover.
- **Multi-purpose:** Available in different sizes and configurations, Steel Bond PVC Sleeves and Caps are used in many uses, ranging from homes to massive infrastructure projects.
- **Simple Installation:** The flexibility of their design permits quick and easy installation while ensuring a secure and safe fit over protected objects.
- **Cost-effective Maintenance** By stopping damage and corrosion, they reduce the necessity for expensive repairs and Maintenance later on down the road.

Steel Bond's dedication to quality guarantees that all of our PVC sleeves and caps meet the highest standards and provide secure and efficient safeguards for the construction project you are working on. When you choose a Steel Bond, you can construct it confidently and ensure that every element is secured.

STAINLESS STEEL DOWEL BARS

Steel Bond Stainless Steel Dowel Bars: Building Tomorrow on Strength and Integrity



Steel Bond's stainless steel Dowel Bars provide the perfect example of strength and resistance to corrosion and are designed to offer crucial foundational support and alignment for concrete constructions. Dowel bars play a vital role in transferring loads and accommodating movement across concrete slabs, ensuring the long-term Durability and endurance of highways, pavements, and other infrastructure projects. Made from the highest quality stainless steel, dowel bars are designed to withstand extreme environmental conditions and not succumb to rust or deterioration, making them an excellent option for projects requiring longevity, Durability, and minimal maintenance.

Key benefits for Steel Dowel Bars are

- **Superior Resistance to Corrosion** The stainless-steel component protects against corrosive elements. It also ensures the structural integrity of the structure is maintained throughout.
- **Enhanced Durability** built-to-last dowel bars significantly prolong the life of structures made from concrete by stopping premature wear and tear.
- **High Load Transfer Performance** It is designed to distribute loads evenly, reducing the stress on the concrete and stopping fractures and displacements.
- **Sustainable Development** The Durability and low maintenance demands of stainless-steel dowel bars make them eco-friendly, reducing the need for replacements or repairs.

Selecting Steel bonds for your stainless-steel dowel bars is committing to the long-term future of the construction project, ensuring they are secured with products known for their strength, reliability, and sustainable environmental practices.

PIPE CLAMPS

Steel Bond Pipe Clamps: Secure Your Success with Unmatched Reliability



Steel Bond's pipe clamps are at the top of piping management solutions and are expertly designed to protect and support pipes in various commercial, industrial, and residential applications. The clamps are designed for strong and durable Construction, providing a firm grip and the alignment of pipes, thereby preventing vibrations, noise, and wear and tear from movements. Made from top-quality materials, Steel Bond's Pipe Clamps provide exceptional durability and corrosion resistance,



making them ideal for harsh conditions. Steel Bond Pipe Clamps have a few key features. Pipe Clamps are:

- **Robust Construction** is designed to withstand extreme pressure and loads, ensuring long-lasting performance.
- **Multi-dimensionality:** Available in various styles and sizes to accommodate multiple pipe diameters and installation requirements, it provides an ideal solution for every project.
- **Simple Installation** Designed for ease of use, they are quick and easily fixed, reducing time and expense.
- **The Corrosion Resistant** The use of epoxy coatings and stainless-steel material safeguards against chemical and environmental destruction, which extends the life of the clamps and the pipe system.

Using Steel Bond Pipe Clamps, you can anticipate a durable, cost-effective solution for securing and managing pipes while improving your network's efficiency and reliability.

STEEL GRATINGS

Steel Bond Steel Gratings: Crafting Pathways with Strength and Precision



Steel Bond's Steel Gratings have been designed to be durable, safe, and versatile, providing the best drainage, ventilation, and flooring applications in various industries. Made from high-strength steel, these gratings can withstand the rigors of heavy use, offer superior corrosion resistance, and ensure longevity in extreme conditions. Their open design makes managing air circulation and water runoff easier, improving security by reducing slip risk and creating safe working surroundings.

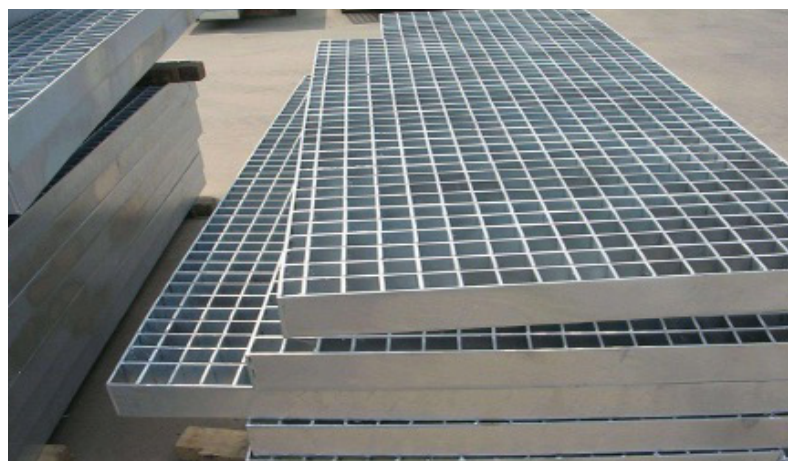
Steel Bond has many vital features. Steel Gratings are:

- **High load-bearing capacity** is designed to carry massive weights, which makes them ideal for commercial and industrial use where durability is a must.
- **The ability to resist corrosion** The grating is finished with protective coatings designed to withstand weather and corrosive substances, prolonging its lifespan.
- **Security Enhanced** the anti-slip texture helps prevent accidents when it is the

presence of oil or water and promotes a safer work environment.

- **Multi-purpose applications** are ideal for platforms, walkways, drainage covers, and ventilation grates. It offers a variety of customization options that can be tailored to the specific needs of your project.

Steel Bond's dedication to quality and innovative design ensures the quality of our steel gratings, which is not just a part of it but an entire solution to infrastructure issues with a focus on safety, strength, and performance.



U BOLTS

Steel Bond U Bolts: The Ultimate in Secure, Strong Fastening Solutions



Steel Bond's U Bolts represent the pinnacle of fastening solutions. They've been created to provide the highest quality and durability for securing cables, pipes, and other round objects used in industrial and Construction. The bolts are constructed from premium materials that ensure they can stand up to the demands of high load and environmental stress without compromising. The U form allows for a comfortable fit around pipes or beams, making them a crucial component of plumbing, electrical, and structural Installation.

The most important attributes that are part of Steel Bond U Bolts include:

- **Flexible Application:** Ideal for fixing pipes, conduits, cables, and pipes and attaching beams for structural support and other construction elements.
- **Sturdy Construction** is made from high-quality stainless steel or steel that can keep outwear, corrosion, and wear, providing longevity and reliability.
- **Precision Engineering:** Every U Bolt is engineered for precise tolerances that ensure the perfect fit and optimum load distribution, which reduces the chance of damage or slippage to the material.
- **Simple Installation** Created for Easy Installation Our U Bolts come with all the required equipment, making them swift and straightforward to install in any location.

When you purchase Steel Bond U Bolts, you'll be able to trust the safety and stability of your Installation with the knowledge that our dedication to high-quality and superior performance covers every bolt.

TESTIMONIALS

Anchor Bolts

Using Steel Bond's anchor bolts gave our project a solid foundation we could trust. Their quality is unmatched.

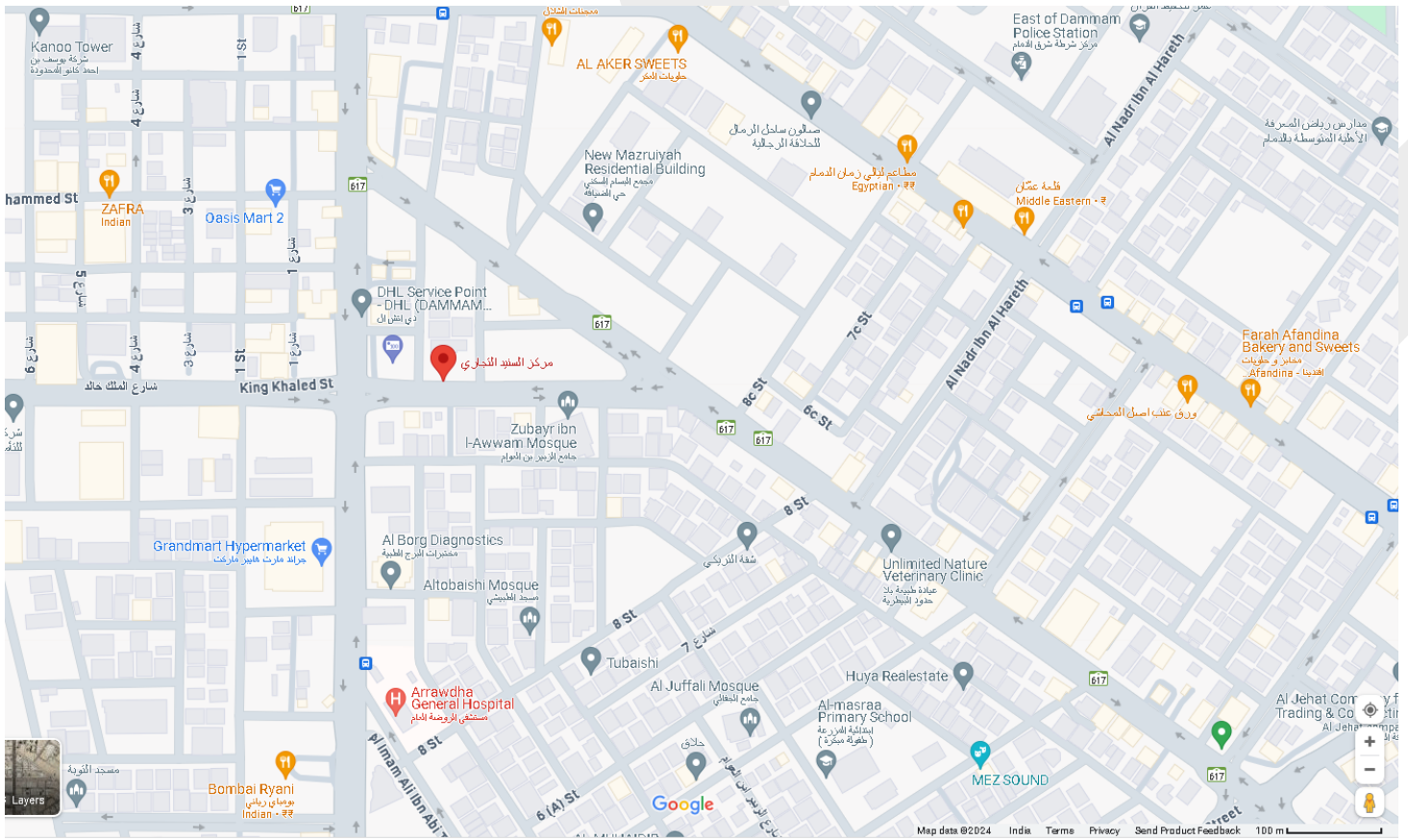
Embedded Plates

Steel Bond's embedded plates fit perfectly into our project, providing the strong backbone we needed.

Embedded Angles

Steel Bond's embedded angles brought unparalleled strength to our structure. Absolutely reliable and versatile.

Epoxy Coated Dowel Bars Steel Bond's epoxy-coated dowel bars have withstood the test of time and elements. Impressive durability.



OUR CLIENTS



Saudi Archirodon Construction



السيف مهندسون مقاولون
EL SEIF Engineering Contracting



SEPCO Arabia Company



Bldg no. 2408
AL MALEK KHALED, AL TUBAYSHI
DAMMAM, ZIP CODE: 32233

Phone Number : 0096650 853 0529
0096655 064 5783

Email address : steelbondsaudi@gmail.com
jaffar@steelbondsaudi.com
sales@steelbondsaudi.com
hidayath@steelbondsaudi.com

